



IGU COMMISSION ON THE DYNAMICS OF ECONOMIC SPACES
 COMMISSION DE L'UGI DES DYNAMIQUES
 DES ESPACES ECONOMIQUES



IGU CDES Regional Conference

Geographies of America and the transformation of economic spaces in global context

September 9 to 11, 2026, Fortaleza, Brazil



Fortaleza, Brazil. Photo by Davis de Paula.



CALL FOR PAPERS

The dynamics of economic spaces in the 21st century are characterized by a complex network of interactions and cross-circuits of financialization, neoextractivism, material and immaterial production, state planning, circulation, and consumption, in a context of contradictory coexistences of diverse temporalities and spatialities. Strategies for regulating the global pattern of flows of people, goods, tangible and intangible assets, services, capital, minerals, and energy are being redefined, and new configurations are emerging, enabled by several types of innovation, in a scenario remarked by geopolitical turbulences, the consequences of the COVID-19 pandemic, climate change, and the “energy transition.” The problematization of several experiences, such as productive restructuring, territorial modernization, the spread of the digital platform economy, the fractures in global production networks, the financialization of social relations, innovation and knowledge, the intertwining of finance and real estate, the migration crisis, environmental issues, and energy problems are just a few examples of the concerns that arise in the new global scenario. This conference seeks to gather researchers and others interested in discussing the geographical dimensions of these movements in the Americas, considering their diversity and structural and contingent recombinations. Also affected by the transitions that are shaking the global economy, the regions of the American continent are undergoing important changes that are reconfiguring their economic geography and reshaping their geopolitical arrangements, while maintaining a lasting and rescaled presence of asymmetries, instabilities, and divergences between political, social, and economic groups. Theoretical approaches and concrete experiences are welcome, interpreted in the context attributed to the regions, territories, and diversity of American economic and political life.

The 2026 IGU CDES Regional Conference invites papers on the following topics, including but not limited to:

- Multiple systemic, conceptual, theoretical, and methodological interpretations of the dynamics of economic spaces.
- Geographical political economy, development, integration, governance, and state planning in territories and regions at different scales.
- Contemporary geopolitical turbulences and their socioeconomic implications.
- Geography of investments, financialization processes, and the spread of digital platform economies.
- Networks and technical systems of state planning and territorial and regional modernization.
- Productive restructuring, old and new industries, industrialization and deindustrialization processes at different geographical scales.
- Economic, financial, social, real estate, infrastructure, and public policy innovations and their relationship with the social production process of space based on multiscale analyses.
- Actors, circuits, articulations, and disjunctions of global networks in various forms of production, circulation, and consumption.

- Impacts of mining, neoextractivism, and globalized agriculture on the territory.
- Political ecology of development, energy sources, and socio-territorial transitions.
- Economic dynamics of migration and disputes in regional and national border areas.

Key dates

- Deadline for Abstracts: June 30, 2026
- Notification about acceptance: July 06, 2026
- Registration closes: July 11, 2026
- Preliminary Program: July 31, 2026
- Final Program: mid-August 2026
- Conference starts: September 9, 2026

Please fill out the form on the conference website with your name, academic status, affiliation, email address, and presentation language, and submit your abstract (maximum 250 words) in English, including 4 to 6 keywords: <https://www.igucdesfortaleza2026.com/> or email all this information to igucdesfortaleza2026@uece.br

The conference languages for oral presentation: Spanish, English, Portuguese, or French.

Conference publication will be an edited book which will be published by a recognized publisher. The book will be an indexed publication (Scopus/WoS) (Details after the conference). Submission deadline of the full conference paper in English for the edited book: November 30, 2026.

Registration

Regular participation fee: 180 US\$ (with dinner), 140 US\$ (without dinner).
Reduced participation fee for students and doctoral candidates: 140 US\$ (with dinner), 100 US\$ (without dinner).

Details about payment will be available on the conference website or will be provided along with the abstract acceptance.

The registration fee includes

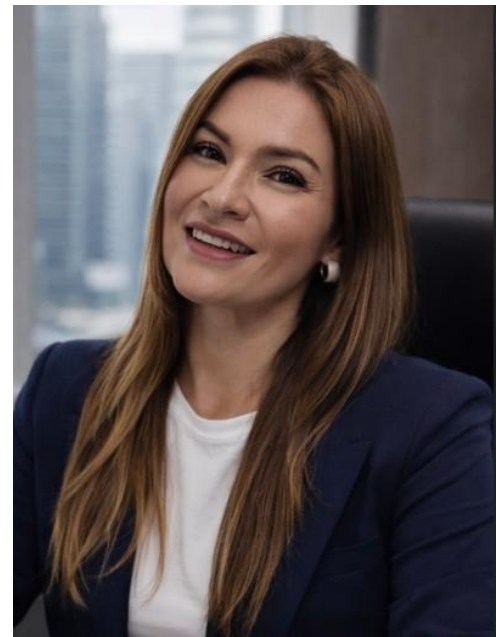
- Coffee breaks, lunches, welcome reception, conference materials, and excursion.
 - Technical support and audiovisual aids during the event.
 - Informational materials and institutional accreditation.
 - Access to all academic sessions and official program events.
 - Use of auditoriums, classrooms, and other spaces prepared for the conference.
 - The organizers will provide invitation letters for visa applications upon request.
- All participants are required to make the registration.

Keynote speakers

- **Christian Berndt** – is an Economic Geographer and Professor at the University of Zurich, Swiss, recognized for his contributions at the crossroads of critical political economy and Science and Technology Studies. His research examines the formation and transformation of markets, processes of globalization, and production networks, with special attention to the relationships among norms, regulation, labor, and the circulation of goods. Berndt analyzes how economic practices are socially and territorially constructed, emphasizing the performativity of markets and the institutional arrangements that sustain global value chains. His empirical studies, often related to Latin America and Europe, contribute to understanding the connections between development, economic governance, and contemporary spatial organization. The topic of Christian Berndt's Keynote speech is: "Uneven geographical development in post-global times: Approaching south-south supply chains from a Latin American perspective".



- **Brígida Miola** – PhD in Environmental Sciences, is the Executive Director of the Secretariat for Economic Development of the Government of Ceará, Brazil (SDE), where she works in the formulation, monitoring, and evaluation of public policies aimed at fostering the state's economic development. Her activities involve strategic planning, institutional coordination, and support for initiatives focused on attracting investment, strengthening productive chains, and promoting regional development. Within the sphere of public administration, she contributes to the integration of government, the productive sector, and research institutions, collaborating in the implementation of programs and projects designed to enhance competitiveness, innovation, and job and income generation. Her work is aligned with the Government of Ceará's strategies for sustainable territorial development and economic diversification. The topic of Brígida Miola's Keynote speech is: "Development, governance and territorial planning – the investment attraction policies of the Government of the State of Ceará".



- **Mónica Arroyo** – is a Professor at the University of São Paulo (USP), Brazil, and a visiting researcher in the Doctoral and Master’s Program in Environmental and Territorial Policies at the University of Buenos Aires (UBA), Argentina, being one of the leading Latin American references in Economic Geography and territorial studies. Her academic work analyzes spatial transformations associated with globalization, with emphasis on the role of technical networks, transportation systems, logistics, and circulation in territorial organization. She also investigates processes of productive restructuring, South American regional integration—especially within Mercosur—and the relationships between the state, corporations, and the corporate use of territory. Her work engages with the critical tradition of Latin American geography, contributing to the understanding of urban and regional dynamics in peripheral economies. Mónica Arroyo will take part in the panel “Trajectory and Renewal of Economic Geography in Latin America”.



- **Eliseu Spósito** – is Emeritus Professor of Economic Geography at São Paulo State University (UNESP), Brazil, where he participated in founding and coordinating the Research Group on Spatial Production and Regional Redefinitions (GAsPERR). He has been a Visiting Professor and has coordinated research internships at the University of Salamanca (Spain), the Pedagogical University of Mozambique, the National University of San Juan (Argentina), Université Paris-Dauphine (France), the University of Lleida (Spain), the University of Coimbra (Portugal), and Université Paris-Cité (France). His main research themes include the spatial dynamics generated by industry and their impacts on urbanization, with emphasis on topics such as productive restructuring and urban restructuring, Industry 4.0, medium and small cities, and development corridors. He is currently a member of several research networks in Brazil and Latin America, including the Latin American Network of Researchers on Space-Economy (RELAEE) and the Network of Researchers on Medium-Sized Cities (ReCiMe). Eliseu Spósito will take part in the panel “Trajectory and Renewal of Economic Geography in Latin America”.



Excursion

The excursion will take place in Pecém Industrial and Port Complex/CIPP, a site that is located 50 minutes by bus from Fortaleza (<https://www.complexodopecem.com.br/#>)

Venue and Accommodation

The IGU CDES Regional Conference takes place at the State University of Ceará in Fortaleza, Brazil. Accommodation must be booked individually and is not covered by the registration fee. The accommodation options are diverse and spread across different urban areas, with emphasis on neighborhoods such as Meireles, Aldeota, and Praia de Iracema, which offer hotels and guesthouses with good infrastructure, as well as easy access to transportation, commerce, and urban services. Details about hotels in Fortaleza will be published later.

Getting to Fortaleza

Fortaleza is the capital city of the state of Ceará, located on the northeastern coast of Brazil, on the shores of the Atlantic Ocean. It has a tropical climate, with high temperatures throughout the year. It is also the fourth most populous city in the country (approximately 2.7 million inhabitants), presenting a high demographic density and an urban dynamic that combines consolidated central areas, peripheral expansion, and an intense coastal life. Culturally, the city stands out for its music, popular traditions, and contemporary artistic production. Its main attractions include urban beaches, cultural facilities, public markets, and events of regional and national relevance. For more information, see this link (<https://visit-fortaleza.com/>).

Travelers from outside Brazil or from other regions of the country can reach Fortaleza mainly by air, through Pinto Martins International Airport, which receives regular domestic flights and international connections, especially from South America and Europe. The city is also accessible by federal highways connecting it to other northeastern capital cities. For more information, see this link (<https://visit-fortaleza.com/conheca-fortaleza/informacoes-uteis/>).

Local Organizing Committee

Dr. Edilson Pereira Júnior, Geography Post-Graduate Program, State University of Ceará/UECE/Brazil. Head of the Local Organizing Committee.

Dr. Denise Bomtempo, Geography Post-Graduate Program, State University of Ceará/UECE/Brazil.

Dr. Davis Pereira de Paula, Geography Post-Graduate Program, State University of Ceará/UECE/Brazil.

Dr. Denis Castilho, Geography Post-Graduate Program, Federal University of Goiás/UFG/Brazil.

Dr. Regina Tunes, Geography Post-Graduate Program, State University of Rio de Janeiro/UERJ/Brazil.



IGU COMMISSION ON THE DYNAMICS OF ECONOMIC SPACES
COMMISSION DE L'UGI DES DYNAMIQUES
DES SPACES ECONOMIQUES



Dr. Juscelino Eudâmidas Bezerra, Geography Post-Graduate Program, University of Brasilia/UNB/Brazil.

International Organizer

Prof. Dr. Eva Kiss, HUN-REN RCAES Geographical Institute, Budapest, Hungary.
Chair of the International Geographical Union Commission on the Dynamics of Economic Spaces (IGU CDES)

For any additional questions, please do not hesitate to contact:

igucdesfortaleza2026@uece.br

About the IGU CDES

The Commission on the Dynamics of Economic Spaces (CDES) is one of the Commission of the more than 45 commissions of the International Geographical Union (IGU). The IGU CDES aims to promote the international collaboration, the diffusion of research findings, and the transfer of knowledge on economic geography. Through conferences, the IGU Commission on "The Dynamics of Economic Spaces" brings together groups of scholars for in-depth discussion of emerging topics in the field of economic geography.

About the Department of Geography and Master's and Doctoral Program in Geography at the State University of Ceará/Brazil

Founded in 1975, the Department of Geography at the State University of Ceará (UECE) houses researchers and students in the areas of Human Geography, Physical Geography, and Instrumental Geography, offering undergraduate and graduate programs, as well as an important postgraduate program. With over 600 students, it is one of the most influential centers for geographical studies in Brazil, effectively contributing to the training of geography professionals and particularly active in the large regions of the Northeast and North of the country.

The UECE's Master's and Doctoral Program in Geography (ProPGeo) is an interdisciplinary center for research, teaching, and consulting in regional economic development and the environment. Researchers from the different research lines of ProPGeo/UECE address issues related to the following areas: regional development, geography of production systems, political economy of migration, coastal geography and marine studies, urban geography of consumption, land use policies and real estate market, and agrarian geography.

